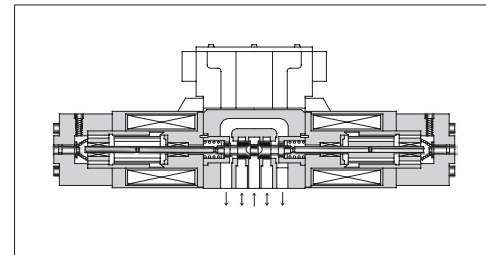


Proportional Electro-Hydraulic Directional and Flow Control Valves

These valves incorporate two control functions - flow and direction - which simplify the hydraulic circuit composition and therefore the cost of the system is reduced.



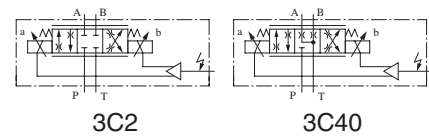
Specifications

| | | Model Numbers | EHDFG-01 | EHDFG-03 |
|-------------------------------|--|---------------|--|--------------------|
| Description | | | | |
| Max. Operating Pressure | MPa (PSI) | | 24.5 (3550) | 24.5 (3550) |
| Max. Tank Line Back Pres. | MPa (PSI) | | 7 (1020) | 7 (1020) |
| Rated Flow | L/min (U.S.GPM) | | 30 (7.92) | 60 (15.9) |
| [Valve ΔP 6.9 MPa (1000 PSI)] | | | | |
| Hysteresis | | | 5% or less | |
| Repeatability | | | 1%* or less | |
| Frequency Response | | | 20 Hz (-90 deg.) | 17 Hz (-90 deg.) |
| Coil Resistance | | | 10.5 Ω | 8.0 Ω |
| Supply Electric Power | | | 24 V DC (21 to 28 V DC Included Ripple) | |
| Input Voltage | By Controlling Variable Resistance (Using of Power from Amp.) | | 1 - 2 kΩ Volume Range | |
| | By Controlling Voltage (Using of Power outside Amp.) | | 0 - -5 V for SOL a | 0 - +5 V for SOL b |
| Input Impedance | | | 10 kΩ | 10 kΩ |
| Power Input (Max.) | | | 40 W | 45 W |
| Ambient Temperature | | | 0 - 50°C (32 - 122°F) (With Circulated Air) | |

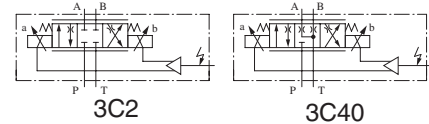
* The repeatability of the valves is obtained by having it tested independently on the conditions similar to its original testing.

Graphic Symbols

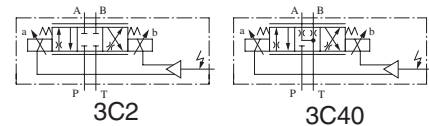
● Metre-in • Metre-out Control



● Metre-out Control



● Metre-in Control



Model Number Designation

| F- | EHDF | G | -01 | -30 | -3C2 | -E | -30 |
|--|---|-----------------------|------------|----------------------------|-------------|--|---------------|
| Special Seals | Series Number | Type of Mounting | Valve Size | Rated Flow L/min (U.S.GPM) | Spool Type* | Direction of Flow | Design Number |
| F: Special Seals for Phosphate Ester Type Fluid (Omit if not required) | EHDF: Proportional Electro-Hydraulic Directional and Flow Control Valve | G: Sub-plate Mounting | 01 | 30: 30 (7.92) | 3C2 | XY : Metre-in • Metre-out X : Metre-in Y : Metre-out | 30 |
| | | | 03 | 60: 60 (15.9) | 3C40 | | 30 |

* Spool type shown in the column is for the centre position.