

FV 200 Series

Proportional Flow Dividers

Proportional Flow Dividers split a single input flow into two output flows, each output being a fixed proportion of the input. For example, a 50/50 flow divider will always split a single input flow into two equal output flows which could be used to operate two motors at equal speeds. The actual rate of flow from each output is not fixed but will vary as the input flow rate varies.

Specifications

Maximum Pressure:
207 bar (workings)

Total Flow Capacity:
76 lpm

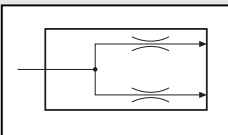
Porting:
See Table 3, ordering codes

Materials:
Steel components in cast iron body

Weight:
1.47 kg

Mounting:
Two bolt

Symbol



Features

- Pressure compensated to keep each output flow at a fixed percentage of the input flow, regardless of pressure variations between the output ports.
- Three standard models are available giving proportional splits of 25 / 75%, 50% / 50% and 40% / 60%. Other proportional splits are available up to 10%/90% (see ordering codes).
- Three flow ranges are available; 10 - 30 lpm, 20 - 50 lpm, 40 - 76 lpm (see ordering codes).

Quality Hydraulic Components from the Webtec Range

Ordering Codes

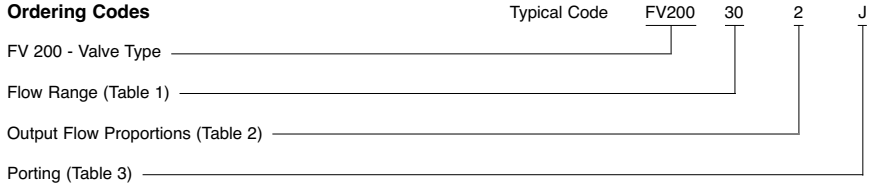


Table 1: Flow Range

| Code | Recommended Flow Range |
|------|------------------------|
| 30 | 10 - 30 lpm |
| 50 | 20 - 50 lpm |
| 70 | 40 - 76 lpm |

Table 2: Flow Rates

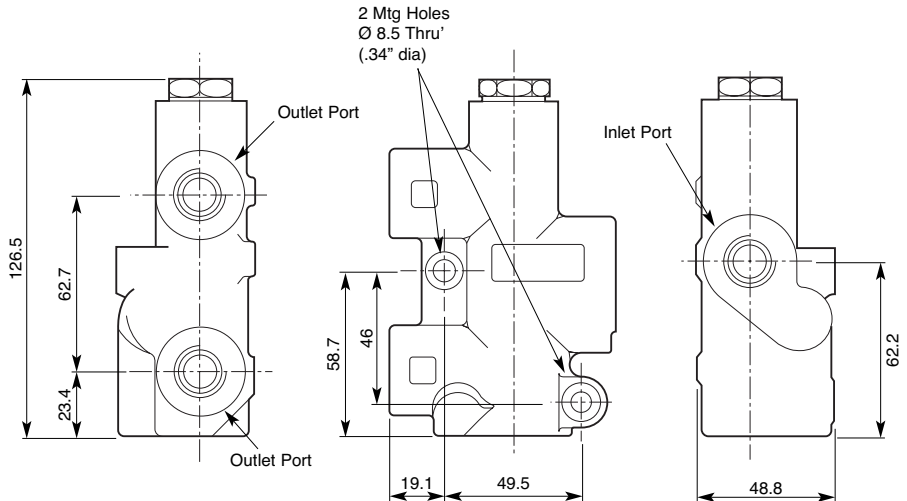
| Code | A/B Ratio % |
|--------------------------------------|-------------|
| 1 | 25 / 75 |
| 2 | 50 / 50 |
| 3 | 40 / 60 |
| other ratios available up to 10 / 90 | |

Table 3: Porting

| Code | Inlet Port | Outlet Ports |
|------|------------|--------------|
| J | 1/2" BSPP | 3/8" BSPP |
| S | 3/4" BSPP | 3/4" BSPP |

Note: 'S' Ported Valve

Installation Details



* Other threads available to special order.