

FV 120 Series

Fixed Priority Flow Dividers

Priority Type Flow Dividers split a single input flow into a 'Priority' (regulated) flow and a 'By-Pass' (excess) flow which can be returned directly to the oil reservoir or used to power a second system. This often dispenses with the need for another pump to operate a second system.

A common application on mobile machinery is to use the 'Priority' (regulated) flow for power steering and the 'By-Pass' (excess) flow for an implement or lift circuit. This ensures the power steering is satisfied first to keep the steering speed constant.

Specifications

Maximum Pressure:
210 bar (working)

Total Flow Capacity:
76 lpm

Regulated Flow Capacity:
See Table 1, ordering codes

Porting:
See Table 3, ordering codes

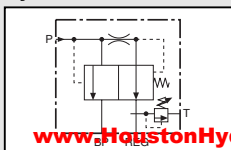
Material:
Steel components in cast iron body

Weight:
1.50 kg

Mounting:
Two bolt

Relief Valve:
See Table 2, ordering code

Symbol



Features

- 'Priority' flow rate is pre-set in factory to customer specifications at any value between 3.78 lpm and 34.1 lpm in increments of 3.78 lpm. Flow through the 'Priority' port will remain constant at the pre-set value as long as input flow equals or exceeds the Priority flow value.
- Pressure compensated permitting both 'Priority' and 'By-Pass' flows to be used simultaneously at varying pressures without effecting the 'Priority' flow rate.
- Built-in pressure relief valve protects the 'Priority' circuit from excess pressure and is adjustable from 34.5 bar to 210 bar (Factory set 82.7 bar unless otherwise specified).

Quality Hydraulic Components from the Webtec Range

Ordering Codes

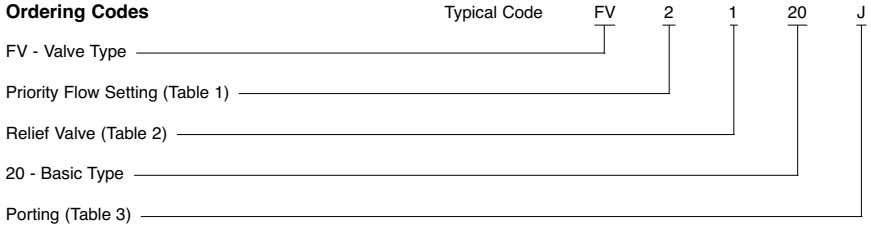


Table 1: Priority Flow

Code	Flow at Priority Port
1	3.78 lpm
2	7.57 lpm
3	11.4 lpm
4	15.1 lpm
5	18.9 lpm
6	22.7 lpm
7	26.5 lpm
8	30.3 lpm
9	34.1 lpm

Table 2: Relief Valve

Code	Description
0	Without Relief Valve
1	With Relief Valve

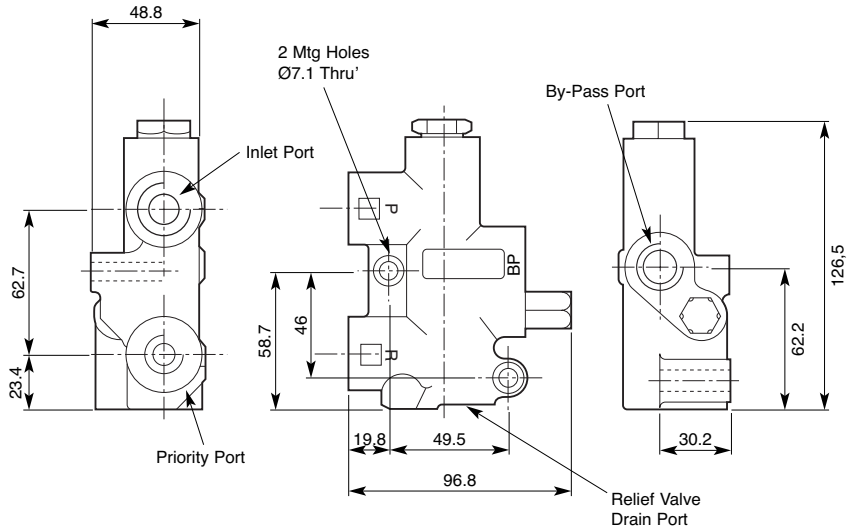
Table 3: Porting

Code	Inlet and By-Pass Port	Priority and Relief Port
A	1/2" NPTF	3/8" NPTF
J	1/2" BSPP	3/8" BSPP
G	7/16" -20UN #4 SAE ORB	9/16" -18UN #6 SAE ORB

Note: Relief Valve can be adjusted between 34.5 bar and 210 bar.
Please specify required setting when ordering otherwise setting will be 82.7 bar.

Installation Details

Dimensions in millimetres



* Other threads available to special order.