

2FV2V Series

Variable Priority Flow Divider with Electric Motor Drive

Priority Type Flow Dividers split a single input flow into a 'Priority' (regulated) flow and a 'By-Pass' (excess) flow which can be returned directly to the oil reservoir or used to power a second system. In many instances this dispenses with the need for another pump to operate a second system.

Specifications

Maximum Pressure:
250 bar

Total Flow Capacity:
114 lpm

Regulated Flow Capacity:
See Table 2, ordering codes

Porting:
See Table 1

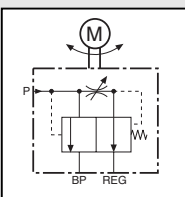
Material:
Steel components in cast iron body painted black

Weight:
2.75 kg

Power Supply:
12V (24V at special request)

Peak Current:
1.0 Amp

Symbol



Features

- Minimum to full Priority flow in 15 seconds.
- Powered from Nom. 12 VDC (12 - 16 VDC).
- Electric motor drive permits adjustment from a position away from the valve such as a cab or a control panel.
- Pressure compensated permitting both 'Priority' and 'By-Pass' flows to be used simultaneously at varying pressures without effecting the 'Priority' flow rate.
- Can be used as unidirectional two port in line flow control by plugging the 'By-Pass' flow port. (**Note:** in this configuration a relief valve must be used on the inlet line).
- 24 volt versions available on request

Quality Hydraulic Components from the Webtec Range

Ordering Codes

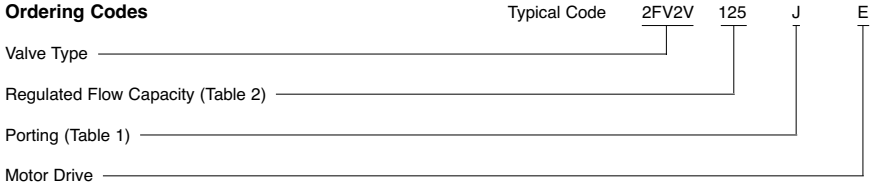


Table 3: Porting*

Code	Port Threads Inlet Regulated Flow and Excess Flow	Relief Valve External Drain where fitted
J	3/4" BSPP	1/4" BSPP
A	3/4" NPTF	1/4" NPTF
M	M22 x 1.5, M27 x 2	M14 x 1.5
G	1-1/16" -12UN #12 SAE ORB	9/16" -18UN #6 SAE ORB
H	1/2" BSPP	1/4" BSPP

* Other threads available to special order.

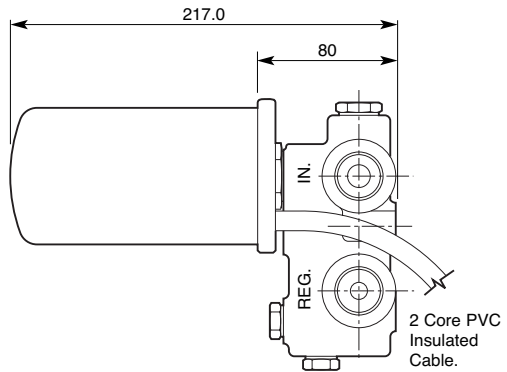
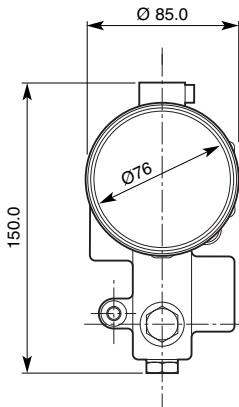
Note: M22 only available in flow code 030 to 125
 M27 only available in flow code 200 to 300
 1/2" BSPP only available in flow code 030 to 125

Table 2: Regulated Flow

Code	Regulated Flow
030	0.5 - 11 lpm
050	0.5 - 19 lpm
080	0.5 - 30 lpm
125	0.5 - 47 lpm
200	0.5 - 76 lpm
250	0.5 - 95 lpm
300	0.5 - 114 lpm

Installation Details

Dimensions in millimetres



Power supply to		
Blue Cable	Brown Cable	Function
-ve	+ve	Valve opens
+ve	-ve	Valve closes