



McDANIEL

Black Steel Case Utility Gauges

"For the price-conscious buyer . . .

McDaniel utility gauges are designed for the price-conscious buyer and user who have an emphasis on maintaining quality and accuracy in a general purpose gauge.

Our utility line offers trusted McDaniel quality in an economical package. Special consideration given to rigorous McDaniel standards for durability, accuracy, and quality of construction.

Our Series 8: Black enameled steel case utility gauges with brass internals. General purpose gauge for non-corrosive atmosphere.

Standard features include a restrictor screw (removable) in the inlet port for pulsation dampening.

. . . and quality user."



SPECIFICATIONS

Accuracy:

ASME B40.1 standard (Grade B) (3 - 2 - 3%)

Dial:

White polycarbonate. Black figures.

Case:

Black enameled steel.

Pointer:

Black Polycarbonate.

Lens:

Polycarbonate.

Precision Movement

Brass.

Bourdon Tube:

Copper alloy (C Form 600 PSI & Below).
Phosphorous bronze (Spiral 800 PSI & Above).

Temperature Utilization:

-4 + 176 degrees Fahrenheit.
-20 + 80 degrees Celsius.

Pressure Utilization:

Static: 75% maximum scale.
Dynamic: 66% maximum scale.

Stem and Socket:

Brass. Restrictor screw standard.
R8 = 1/8" NPT (1/4" NPT special order available)
T8 = 1/4" or 1/8" NPT available
J8 = 1/4" NPT (1/8" NPT special order available)

Dial Sizes / Ranges Available

1 1/2" - (R8) / Vac, Comp, Rec 3-15, up to 5,000 psi
2" - (T8) / Vac, Comp, Rec 3-15, up to 5,000 psi
2 1/2" - (J8) / Vac, Comp, Rec 3-15, up to 15,000 psi

Configurations Available:

Bottom connected standard
(L) = Center-back connected
(U) = U-Clamp mounted, Center-back connected
(P) = Front flange, Center-back connected

McDaniel Controls, Inc.

P. O. Box 187, Luling, LA 70070 • 14148 Highway 90, Boutte, LA 70039 U.S.A.

(985) 758-2782 • New Orleans (504) 467-1533 • Fax (985) 758-1686

www.mcdanielcontrols.com

Houston Hydraulic Sales@HouHyd.com
713-692-4421 www.HoustonHydraulic.com

DIMENSIONAL DATA

In millimeters (mm) and inches (in.)

CONNECT
BOTTOM

CENTER
BACK

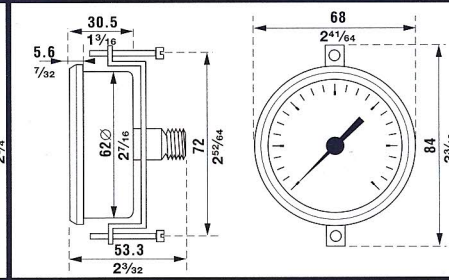
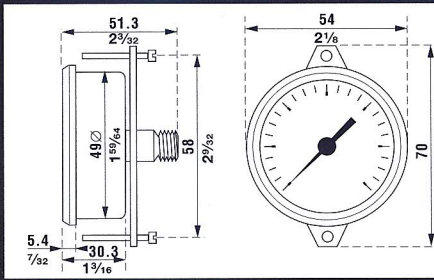
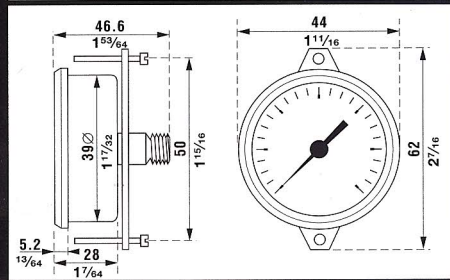
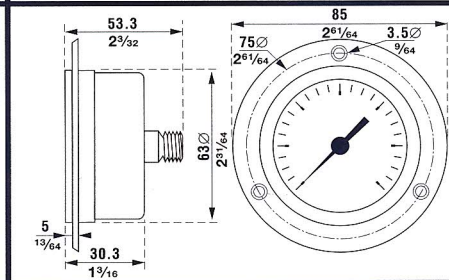
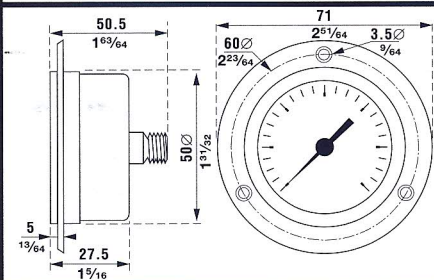
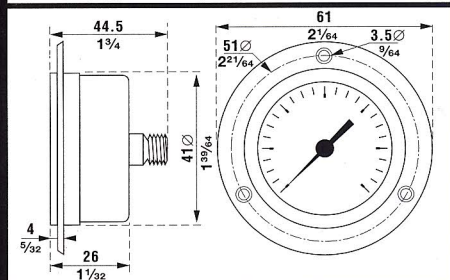
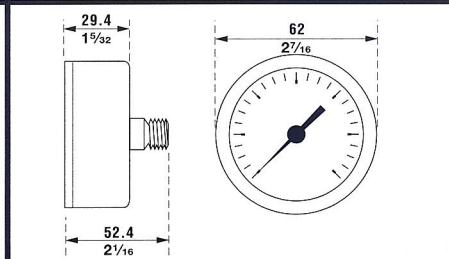
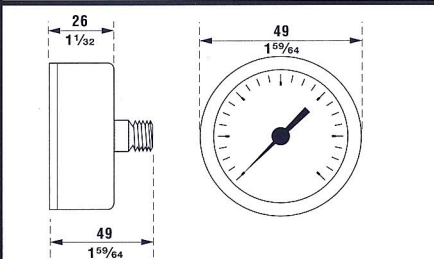
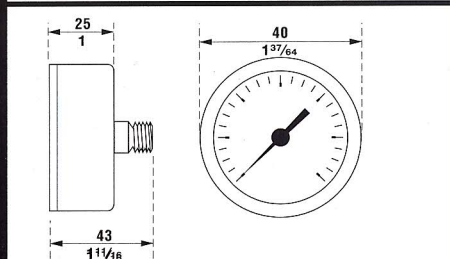
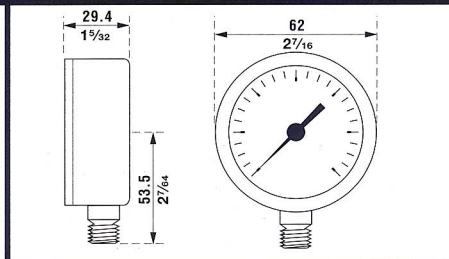
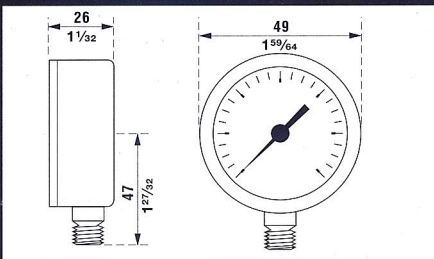
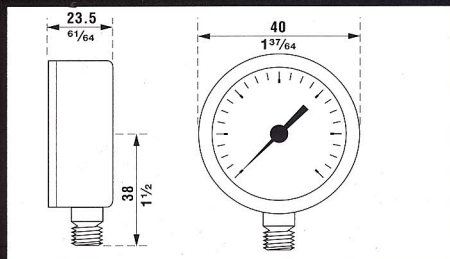
MOUNT
PANEL

MOUNT
U CLAMP

R 8 1 1/2 inch (40mm)

T 8 2 inch (50mm)

J 8 2 1/2 inch (63mm)



* See website for dimensional data and downloadable AutoCAD files: www.mcdanielcontrols.com

McDaniel also makes gauges in other materials; in sizes and ranges to fit a wide variety of applications, and in many special configurations.

Ask your representative about McDaniel gauges with stainless steel or Mone]® internals, all brass or all stainless steel gauges, test gauges, or other requirements.

© Mone] is a registered trademark of INCO family of companies.

Limited Warranty
McDaniel warrants our utility gauges to be free of defects in material and workmanship. Replacement of any defective gauge will be made at no cost to the purchaser. Gauge failures determined to be caused by over-range and incompatibility with environment/product media or abuse will not be considered under this warranty.

Range code	Range psi	Minor Increments
A	0 - 15	.5
B	0 - 30	1
C	0 - 60	1
D	0 - 100	2
E	0 - 160	5
F	0 - 200	5
G	0 - 300	10
H	0 - 400	10
I	0 - 600	20
J	0 - 800	20
K	0 - 1000	20
L	0 - 1500	50
M	0 - 2000	50
N	0 - 3000	100
4k	0 - 4000	100
O	0 - 5000	100
6k	0 - 6000	200
P	0 - 10000	200
Q	0 - 15000	500
VACUUM	VACUUM	VACUUM
S	VAC 30"Hg - 0	1
RECEIVER	RECEIVER	RECEIVER
T	REC 3 - 15"	2
COMPOUND	COMPOUND	COMPOUND
U	30"Hg + 15	1-0-2
V	30"Hg + 30	1-0-2
W	30"Hg + 60	2-0-5
X	30"Hg + 100	2-0-5
Y	30"Hg + 160	2-0-10
2k	30"Hg + 200	5-0-15
Z	30"Hg + 300	10-0-30

HOW TO ORDER

- Select the model number (**R8**, **T8**, or **J8**)
- Specify range code from list at left.
- Specify mounting code:
(Bottom connection is standard, no code)
"L" = (Center-back connection)
"U" = (U-Clamp, Center-back connection)
"P" = (Panel mount w/front flange, Center-back connection)
- Specify any other special configurations or options. (special NPT size, dual-scales, etc.)

Model #

(Example: **R8D**: "R8" = 1 1/2" (43mm) Dial - "D" = (0 - 100 psi range)
T8EL: "T8" = 2" (50mm) Dial - "E" = (0 - 160 psi range) - "L" = (Center-back)
J82k: "J8" = 2 1/2" (63mm) Dial - "2k" = (30"Hg + 200 psi range)

Special Configuration Adder Codes

B = psi/Bar (dual scale) (nonstock)
K = psi/kPa (dual scale) (nonstock)
1/8 = 1/8" NPT (use on T8 (stock), and J8 non stock)

* Receiver gauge is dual scale. (0 - 100% primary, 0 - 10 square root secondary)

DISTRIBUTED BY:

Houston Hydraulic
713-692-4421

Sales@HoustonHydraulic.com
www.HoustonHydraulic.com

It is recommended that users of pressure gauges become familiar with American National Standard ASME B40.1, entitled Gauges, Pressure and Vacuum - Indicating Dial Type - Elastic Element. This specification is available from:

American Society of Mechanical Engineers
3 Park Avenue
New York, New York 10016
116: 212-591-7722