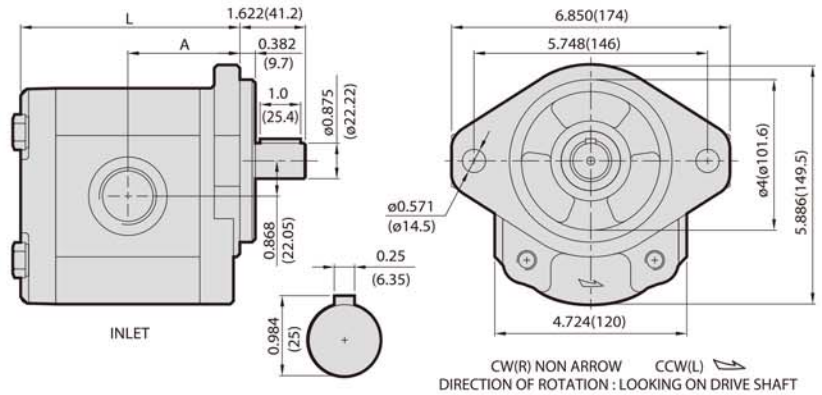




OVERALL DIMENSIONS



ORDERING EXAMPLE

For Example **3** **G** **B** **6** **U1**
 SERIES TYPE FLANGE SHAFT PORT DISPL. ROTATION

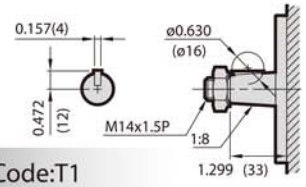
If you need pump with displ.2.01 c.i.r and rotation is cw, the model number is : **3GB6U133R**

PERFORMANCE DATA

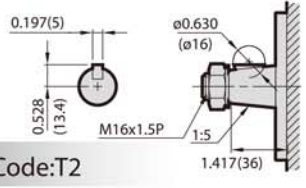
MODEL	DISPLACEMENT		PRESSURE psi(MPa)		RPM RANGE	DIMENSIONS inch(mm) SUITABLE "B", "C", "E" MOUNTING FLANGES		WEIGHT	
	c.i.r	cm ³ /r	CONTINUOUS	MAX.		A	L	Kg	LBS
18	1.10	18.0	3500(25)	3800(27)	3000	2.539(64.5)	4.961(126)	8.4	18.5
20	1.22	20.0	3500(25)	3800(27)	3000	2.559(65.0)	5.000(127)	8.5	18.7
23	1.40	23.0	3500(25)	3800(27)	3000	2.579(65.5)	5.039(128)	8.6	18.9
25	1.52	25.0	3500(25)	3800(27)	3000	2.618(66.5)	5.118(130)	8.7	19.1
28	1.70	28.0	3500(25)	3800(27)	3000	2.657(67.5)	5.197(132)	8.9	19.6
33	2.01	33.0	3500(25)	3800(27)	3000	2.736(69.5)	5.354(136)	9.1	20.0
38	2.31	38.0	3500(25)	3800(27)	3000	2.815(71.5)	5.512(140)	9.3	20.5
44	2.68	44.0	3100(22)	3400(24)	2500	2.894(73.5)	5.669(144)	9.5	20.9
52	3.17	52.0	2800(20)	3100(22)	2500	2.992(76.0)	5.866(149)	9.8	21.6
60	3.66	60.0	2600(18)	2800(20)	2500	3.110(79.0)	6.102(155)	10.0	22.0
70	4.27	70.0	2300(16)	2600(18)	2500	3.248(82.5)	6.378(162)	10.4	22.9
80	4.88	80.0	2100(15)	2400(17)	2300	3.346(85.0)	6.575(167)	10.7	23.5
90	5.49	90.0	2000(14)	2300(16)	2000	3.465(88.0)	6.811(173)	11.1	24.4

DRIVE SHAFTS

SUITABLE FOR C FLANGE

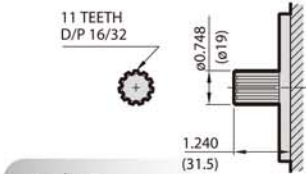
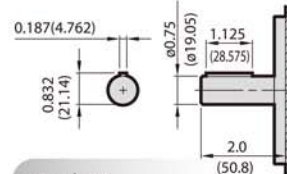
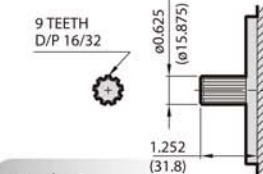
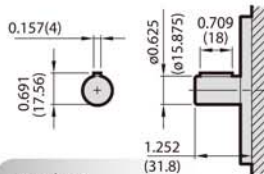


SUITABLE FOR E FLANGE

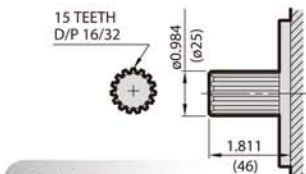
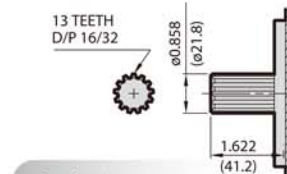
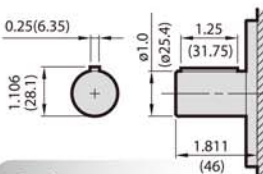
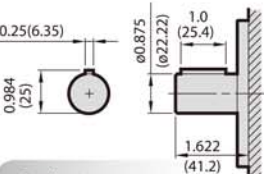


DRIVE SHAFTS

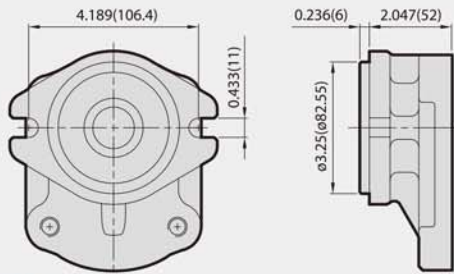
SUITABLE FOR A FLANGE



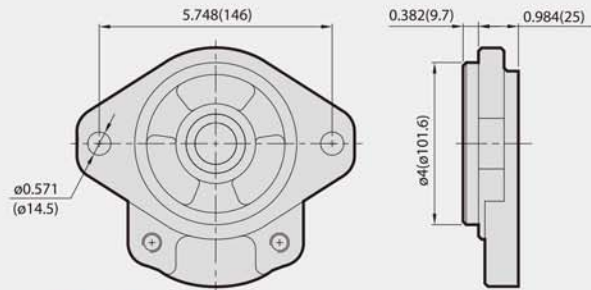
SUITABLE FOR B FLANGE



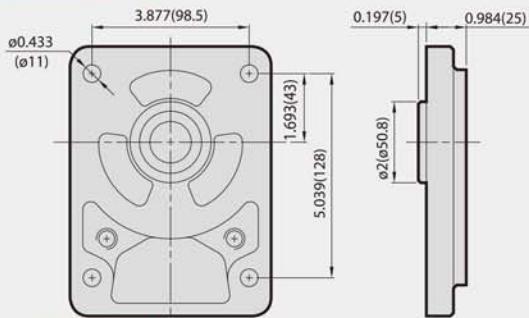
■ MOUNTING FLANGES



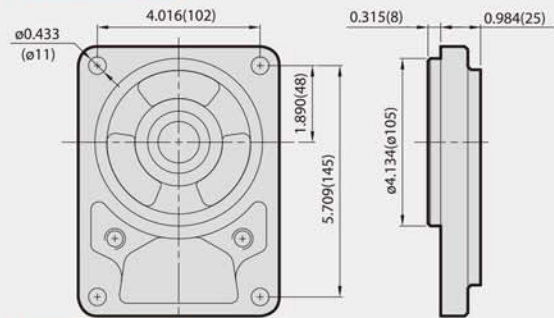
Code:A



Code:B



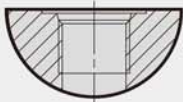
Code:C



Code:E

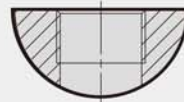
■ PORTS

UNF



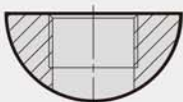
Code	INLET	OUTLET
U1	1-5/16-12 UNF# 16	1-1/16-12 UNF# 12
U2	1-5/8-12 UNF# 20	1-1/16-12 UNF# 12
U3	1-7/8-12 UNF# 24	1-5/16-12 UNF# 16

PT



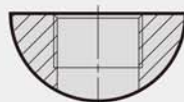
Code	INLET	OUTLET
P1	PT 1"	PT 3/4"
P2	PT 1-1/4"	PT 3/4"
P3	PT 1-1/2"	PT 1"

NPT



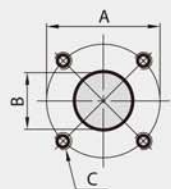
Code	INLET	OUTLET
N1	NPT 1"	NPT 3/4"
N2	NPT 1-1/4"	NPT 3/4"
N3	NPT 1-1/2"	NPT 1"

BSPF



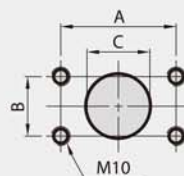
Code	INLET	OUTLET
B1	BSPF 1"	BSPF 3/4"
B2	BSPF 1-1/4"	BSPF 3/4"
B3	BSPF 1-1/2"	BSPF 1"

FLANGE (SQUARE)



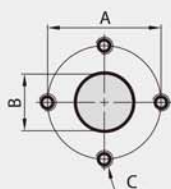
Code	PORT	A	B	C
F1	INLET	1.575(40)	0.787(20)	M6
	OUTLET	1.378(35)	0.591(15)	M6
F2	INLET	2.165(55)	1.063(27)	M8
	OUTLET	2.165(55)	0.748(19)	M8

FLANGE(RECTANGLE)



Code	PORT	A X B	C
F3	INLET	2.063(52.4)x1.031(26.2)	0.984(25)
	OUTLET	1.874(47.6)x0.874(22.2)	0.748(19)
F4	INLET	2.307(58.6)x1.189(30.2)	1.260(32)
	OUTLET	2.063(52.4)x1.031(26.2)	0.984(25)

FLANGE(DIAMOND)



Code	PORT	A	B	C
F5	INLET	1.575(40)	0.748(19)	M8
	OUTLET	1.181(30)	0.512(13)	M6
F6	INLET	2.008(51)	1.063(27)	M10
	OUTLET	1.575(40)	0.748(19)	M8

REAR PORT



Code	INLET	OUTLET
ZU1	1-5/16-12 UNF# 16	1-1/16-12 UNF# 12
ZU2	1-5/8-12 UNF# 20	1-1/16-12 UNF# 12
ZU3	1-5/8-12 UNF# 20	1-5/16-12 UNF# 16

